

## 2-2 What are cells?

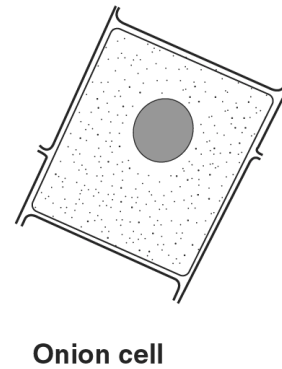
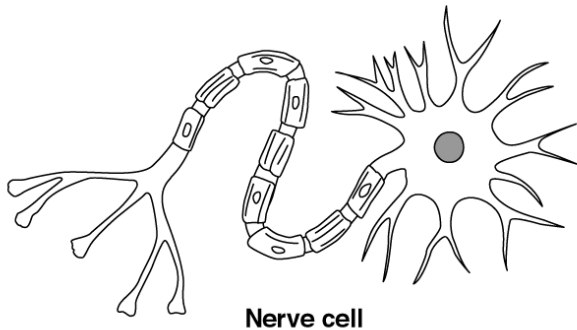
### Lesson Review

Complete the following.

1. Cells carry out all \_\_\_\_\_ .
2. The first person to observe dead cells was \_\_\_\_\_ .
3. The first living cells were observed by \_\_\_\_\_ .
4. A theory is supported by \_\_\_\_\_ .
5. Explain the three parts of the cell theory.
  - a. \_\_\_\_\_  
\_\_\_\_\_
  - b. \_\_\_\_\_  
\_\_\_\_\_
  - c. \_\_\_\_\_  
\_\_\_\_\_

### Skill Challenge

**Skills:** comparing, contrasting



1. Describe the shapes of the two cells shown above in your own words. \_\_\_\_\_  
\_\_\_\_\_
2. How are the two cells alike? \_\_\_\_\_  
\_\_\_\_\_
3. How are the two cells different? \_\_\_\_\_  
\_\_\_\_\_